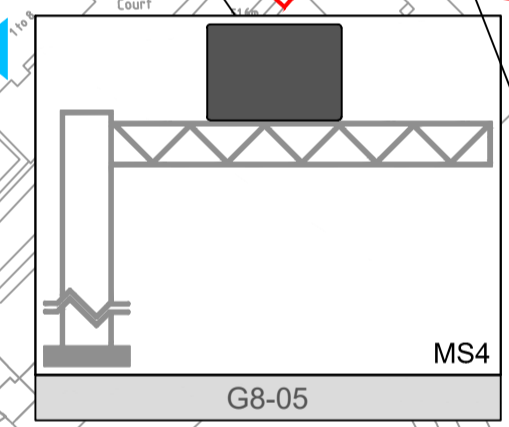
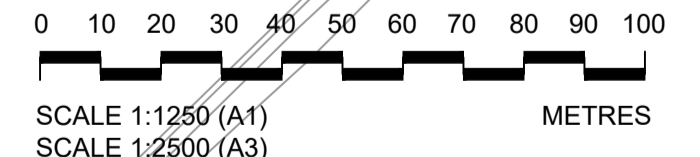
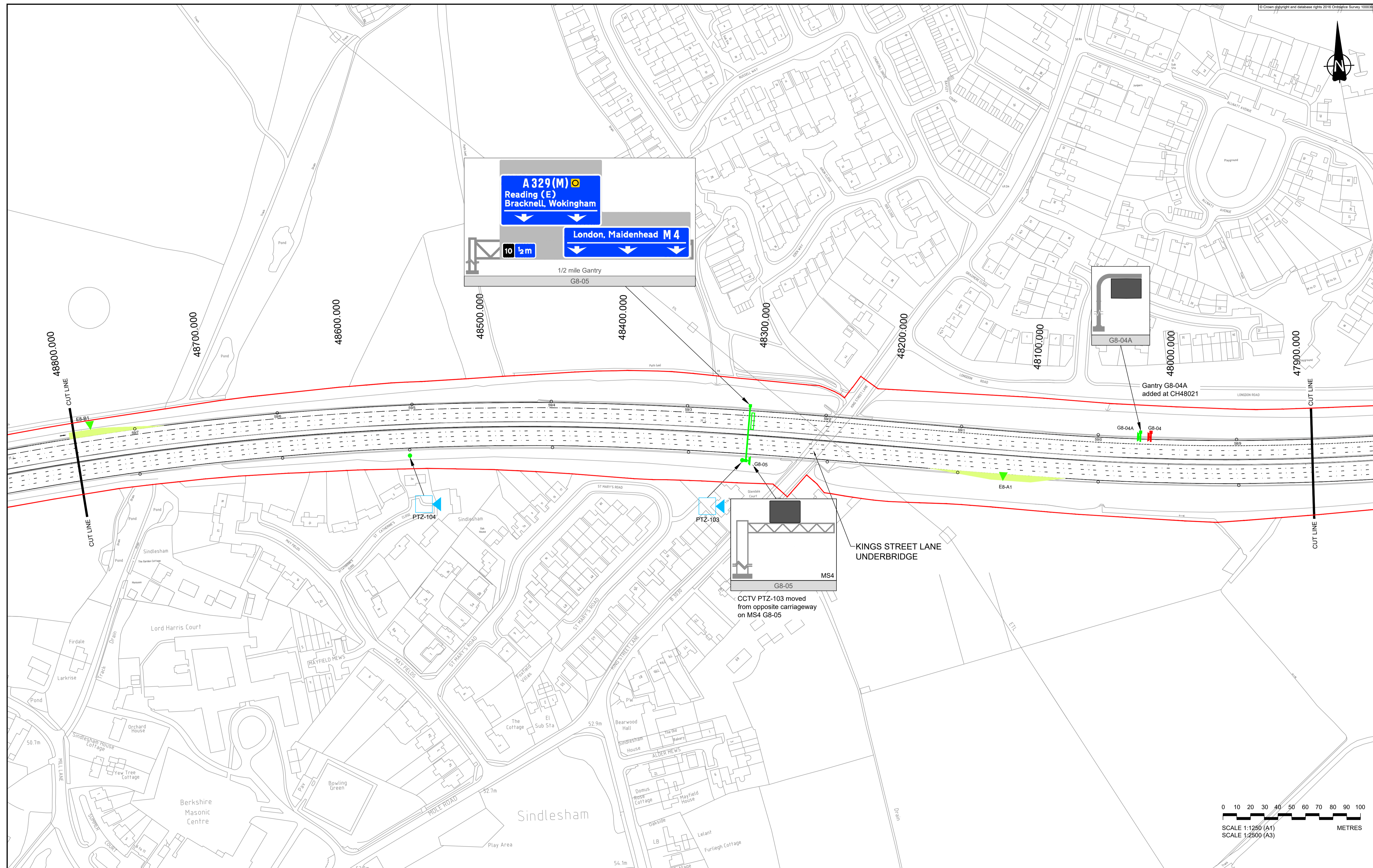


Gantry G8-04A added at CH48021



CCTV PTZ-103 moved from opposite carriageway on MS4 G8-05

KINGS STREET LANE UNDERBRIDGE



LEGEND

- SIGN GANTRY
- CARRIAGEWAY SIGNALS
- LANE SIGNALS
- GANTRY TO BE RETAINED
- GANTRY TO BE REMOVED
- PROPOSED GANTRY
- ORDER LIMIT
- MARKER POST
- NEW TELEPHONE

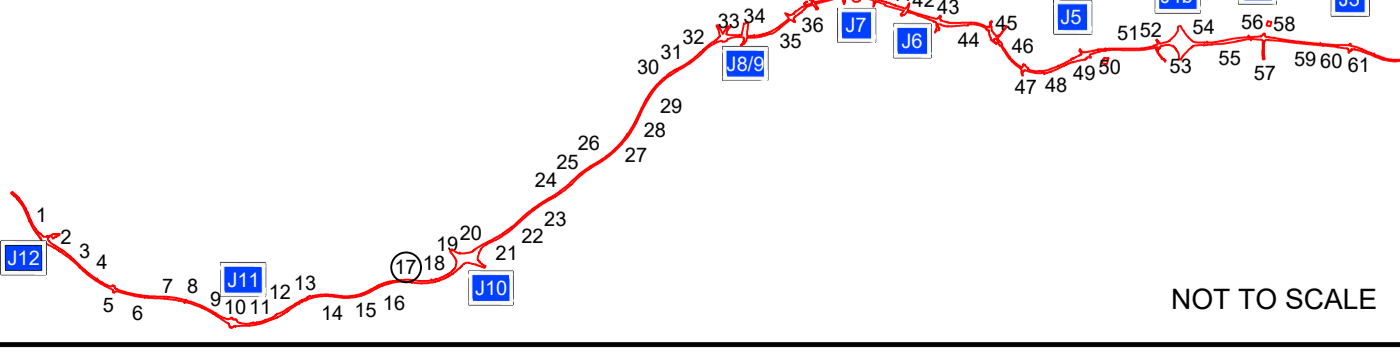
E9-A2 EMERGENCY AREA

- POLICE OBSERVATION POST
- NEW CCTV (Closed Circuit Television)/PTZ CAMERA

NOTES

For information on infrastructure limits of deviation see Volume 2 Doc ref. 2.3 Works Plans.

KEY PLAN



NOT TO SCALE

P01	S2	18/02/2022	Non Material Change Application	WE	ST	DP
Rev	Status	Rev. Date	Purpose of revision	Drawn	Chk'd	Appr'd

Client

DELIVERING THROUGH

Project SMART MOTORWAYS PROGRAMME
M4 JUNCTIONS 3-12

Drawing title
**ENGINEERING AND DESIGN
REPORT MAINLINE
GENERAL ARRANGEMENT
SHEET 17 OF 61**

Status	S2	Revision	P01
Scale	1:1250 @ A1	Date	18/02/2022
Drawn By	William Emery		
Checked By	Stephen Thompson		
Approved By	David Pilsforth		
Project No.	HA PIN	Originator	Original Size
	HA514451	CHHJ	A1
Drawing number	Volume Location	I Type Role Number	
	HGN-SZ_MLZZZZZ_Z-DR-CH-1049		